



Volvo Construction Equipment

EC350D

Volvo Excavators 34.8-36.9 t 286 hp



A passion for performance

At Volvo Construction Equipment, we're not just coming along for the ride. Developing products and services that raise productivity – we are confident we can lower costs and increase profits for industry experts. Part of the Volvo Group, we are passionate about innovative solutions to help you work smarter – not harder.

Helping you to do more.

Doing more with less is a trademark of Volvo Construction Equipment. High productivity has long been married to low energy consumption, ease of use and durability. When it comes to lowering life-cycle costs, Volvo is in a class of its own.

Designed to fit your needs.

There is a lot riding on creating solutions that are suited to the particular needs of different industry applications. Innovation often involves high technology – but it doesn't always have to. Some of our best ideas have been simple, based on a clear and deep understanding of our customers' working lives.



You learn a lot in 180 years.

Over the years, Volvo has advanced solutions that have revolutionized the use of construction equipment. No other name speaks Safety louder than Volvo. Protecting operators, those around them and minimizing our environmental impact are traditional values that continue to shape our product design philosophy.

We're on your side.

We back the Volvo brand with the best people. Volvo is truly a global enterprise, one that is on standby to support customers quickly and efficiently – wherever they are.

We have a passion for performance.



Volvo Trucks



Renault Trucks



Mack Trucks



UD Trucks



Volvo Buses



Volvo Construction Equipment



Volvo Penta



Volvo Financial Services

More power, greater efficiency

Introducing the EC350D from Volvo – a powerful production machine designed to boost performance. State-of-the-art technology including Volvo's unique ECO mode, new electro-hydraulic system and fuel efficient D8 engine ensures this machine delivers fast cycle times, high digging power and low fuel consumption.



Volvo D8 engine

Featuring advanced technology and built on decades of experience, the powerful, new Volvo D8 engine delivers the ultimate combination of high performance and low fuel consumption.



Work modes

Volvo's unique, integrated work mode system now includes the G4 mode for optimum fuel efficiency and performance. Operators can easily select the best work mode for the task at hand – select from I (Idle), F (Fine), G (General), H (Heavy) and P (Power max).



Advanced hydraulics

New electro-hydraulic system and main control valve use intelligent technology to control on-demand flow and reduce internal losses in the hydraulic circuit. This provides increased controllability, shorter cycle times and improved fuel efficiency.



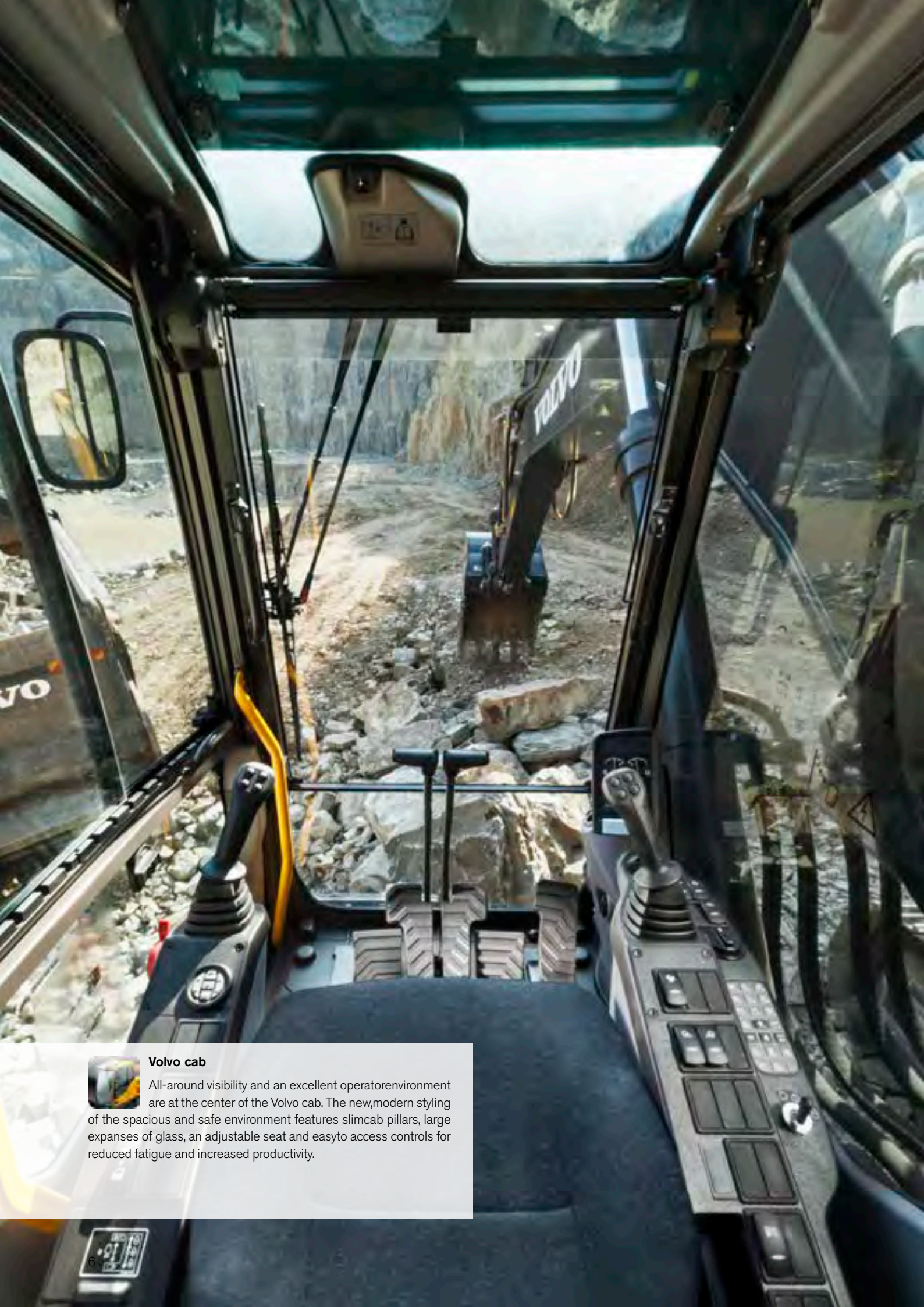
Boom float

This optional feature allows the boom to 'float' over the ground by simply using gravitational force. As a result, more hydraulic flow is available for other circuits – ensuring faster cycle times and more control in grading operations.



ECO mode

Volvo's unique ECO mode improves fuel efficiency without any loss of performance in most operating conditions. The design features electronic pump control technology which reduces flow and pressure losses while maintaining digging power and cycle time.



Volvo cab

All-around visibility and an excellent operator environment are at the center of the Volvo cab. The new, modern styling of the spacious and safe environment features slim cab pillars, large expanses of glass, an adjustable seat and easy access controls for reduced fatigue and increased productivity.

Productivity unleashed

At Volvo we know that a safe, comfortable operator is a productive worker. That's why the EC350D cab has been built strong and designed to facilitate efficient performance all day long. Step inside and experience the difference a premium working environment has on productivity.

I-ECU

The new, color LCD monitor displays machine status information including fuel consumption data for high productivity. The user-friendly design features a large, anti-glare, tiltable screen and can be used in 30 languages.



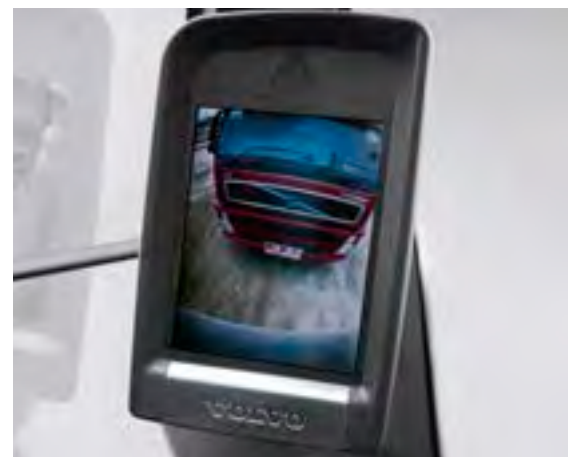
Control panel

Optimally positioned control panel enables the operator to easily navigate through the I-ECU monitor and activate machine functions in a safe and comfortable way.



ROPS*

A Roll Over Protective Structure (ROPS) certified cab is recommended for added safety in the unlikely event of machine roll over. This provides increased peace of mind in challenging applications.



Climate control system*

Industry-leading air circulation and defrosting system with 14 well-spaced vents for increased operator comfort and productivity.

Rearview camera*

The rearview camera increases safety by giving the operator visibility of the area behind the machine via the I-ECU monitor.

* Optional in certain markets.

The definition of strength

If you're looking for a strong and durable excavator to handle the most severe, heavy-duty applications then look no further than the EC350D. Whether you're working on a quarry, in construction or any other application, this robust, reliable machine excels in demanding conditions and won't let you down.

Undercarriage components

Large, strong undercarriage components ensure smooth operation and long service life when working in high shock load applications. Various widths of durable track shoes increase machine stability and floatation.



Undercarriage frame

The strong, three-piece undercarriage and high tensile steel X-shaped frame are built to withstand tough conditions. For ultimate durability, the idler frames and motor brackets are reinforced.



Main frame

The robust and durable structure easily absorbs impacts transferred from the digging equipment. Welding between the center and side frames and the boom and boom cylinder mounts is reinforced for superior durability and performance.



Side wear plates

Additional plates between the end of the arm and the bucket mounting area protect the arm-end bearing. The side wear plates are easily replaceable in the field - ensuring maximum machine uptime and reduced maintenance costs.



Strong structure

The strong and durable structure includes a reinforced boom and arm made from high strength tensile steel for maximum reliability. Thick plates around critical areas equally distribute mechanical stresses.



Service access

Grouped filters and greasing points are easy to access from ground level via large, wide compartment doors. The electrical distribution box, which contains all fuses and relays, is also accessed from ground level.

Keep working, keep earning

The EC350D makes maintenance easy – allowing you to get the most out of each working day. With helpful features including grouped filters and greasing points and anti-slip plates for safe maintenance access, checks can be carried out faster and machine uptime will increase.

Service display

The I-ECU monitor features a built in service interval display for easy monitoring of engine oil/filter, fuel filter/water separator, hydraulic oil and hydraulic oil filter.



Extra water separator*

An additional water separator further prevents water and impurities from entering the engine. This feature provides increased water separation and filtration capacity for extended engine lifetime, durability and reliability.



Cooling system

The radiator, charged air cooler and hydraulic oil cooler are situated side-by-side on a single layer to maximize efficiency, reduce blockages and aid cleaning. The system is easily accessed for maintenance by simply opening the side door from ground level.



Oil bath pre-cleaner*

An additional pre-cleaner prevents dirt from entering and damaging the engine for maximum reliability and reduced maintenance costs. This feature is recommended for machines working in dusty environments.

* Optional in certain markets.

Get the most from your excavator

Maximize your excavator's productivity and profitability with Volvo's comprehensive range of attachments – designed to work in perfect harmony with Volvo machines. Access more applications and effectively perform a variety of tasks while experiencing reduced fuel consumption and reduced cycle times.



Volvo buckets

Volvo offers a range of high quality buckets designed to perform in a variety of materials. Featuring exceptional design and built in durability, Volvo buckets efficiently handle the toughest of jobs.



Hydraulic breakers

Volvo hydraulic breakers have been built to break the most demanding materials. With consistent power and high breaking force you'll benefit from maximum impact and durability. Set your Volvo breaker at the right frequency to suit your application needs.

VOLVO QUICK COUPLERS & INTERFACES



Dedicated quick coupler

Volvo's dedicated quick couplers are the ideal choice when you need high performance as well as the ability to easily switch between various attachments – including a tiltrotator. The lightweight design features a low build height and a tight fit to the attachment.



Universal quick coupler

For ultimate flexibility, the universal quick coupler picks up a wide range of both Volvo and other brand attachments. The coupler can be used with buckets in both the face shovel and backhoe position.



Direct fit

For maximum productivity when only operating in one application, Volvo's direct fit attachments provide the best performance and shortest tip radius.

VOLVO BUCKETS & GROUND ENGAGING TOOLS



General purpose bucket

The perfect tool for digging and re-handling soft to medium material such as dirt, sand and loose clay soils.



Heavy-duty bucket

This bucket excels at digging compact materials including loose rock, hard clay and gravel. It can be used in applications such as quarrying or mining.



Volvo Tooth System

Volvo's robust range of teeth and adapters are designed to cover all applications.



Wear parts

For increased durability, Volvo provides segments, side shrouds, bottom shrouds, teeth, side cutters and bolt-on edges.

VOLVO HYDRAULIC BREAKERS



Volvo HB36

The all-in-one hydraulic breaker package includes everything you need to start using your breaker. Depending on the machine, it contains a breaker, hydraulic hoses, a breaker bracket and tool.



Breaker Tools

Volvo hydraulic breakers can be used in a variety of applications. To ensure optimum performance in your application select the right breaker tool from the range.

The best machine for the job



Strong structure

Strong and durable structure with a reinforced boom and arm allow the machine to work in the most severe, heavy-duty applications.

Advanced hydraulics

New electro-hydraulic system and main control valve use intelligent technology to control on-demand flow for high performance and efficiency.

Work modes

Volvo's unique, integrated work mode system now includes the G4 mode for optimum fuel efficiency and machine performance.

Optional boom float

Reduce cycle time and improve control in grading operations by using gravitational force to 'float' the boom over the ground.

AMS

The Attachment Management System (AMS) - controlled through the I-ECU - stores settings for up to 20 different hydraulic attachments.



Customer Support Agreements

Volvo Customer Support Agreements (CSA) offer service and maintenance with maximum cost control and minimum downtime.



I-ECU

The new, color LCD monitor clearly displays machine status information for easy operation and increased productivity.

Extra water separator*

An additional water separator further prevents water and impurities from entering the engine – providing extended engine lifetime, extra durability and reliability.



Cab

Spacious and safe operator environment with all-around visibility, an adjustable seat and easy to access controls.



ECO mode

Volvo's unique ECO mode improves fuel efficiency without any loss of performance in most operating conditions.



Volvo D8 engine

The powerful, new Volvo D8 engine delivers the ultimate combination of high performance and low fuel consumption.

Climate control system*

Industry-leading air circulation and defrosting system with 14 well-spaced vents for increased operator comfort and productivity.



Service access

Grouped filters and greasing points are easy to access from ground level via large, wide compartment doors.

Robust undercarriage

The strong, three-piece undercarriage and high tensile steel X-shaped frame are built to withstand tough conditions.



Adding value to your business

Being a Volvo customer means having a complete set of services at your fingertips. Volvo can offer you a long-term partnership, protect your revenue and provide a full range of customer solutions using high quality parts, delivered by passionate people. Volvo is committed to the positive return of your investment.



Complete Solutions

Volvo has the right solution for you. So why not let us provide all your needs throughout the whole life cycle of

your machine? By listening to your requirements, we can reduce your total cost of ownership and increase your revenue.



Genuine Volvo Parts

Our attention to detail is what makes us stand out. This proven concept acts as a solid investment in your machine's future. Parts are extensively tested and approved because every part is vital for uptime and performance. Only by using Genuine Volvo Parts, can you be sure that your machine retains the renowned Volvo quality.



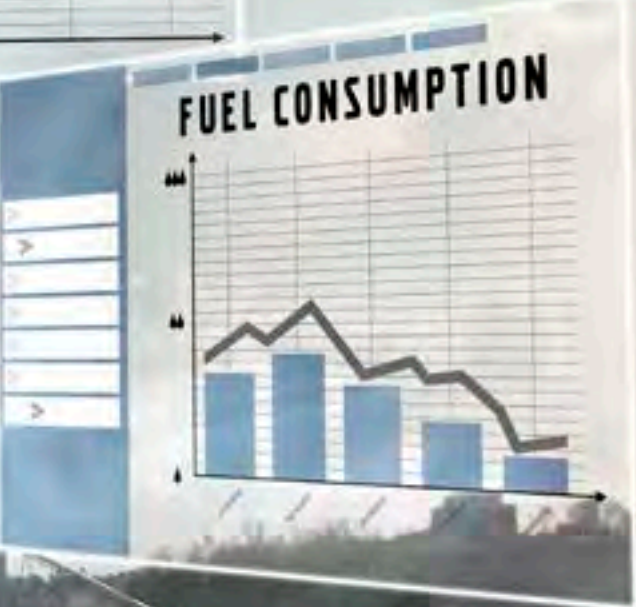
Service Network

In order to respond to your needs faster, a Volvo expert is on their way to your job site from one of our Volvo facilities. With our extensive infrastructure of technicians, workshops and dealers, Volvo has a comprehensive network to fully support you using local knowledge and global experience.



SERVICE PLAN

DAY01	DAY02	DAY03	DAY04	DAY05	DAY06	DAY07
						✓
			✓	✓		
	✓					✓
		✓				✓
✓						
		✓		✓		



Customer Support Agreements

The range of Customer Support Agreements offer preventive maintenance, total repairs and a number of uptime services. Volvo uses the latest technology to monitor machine operation and status, giving you advice to increase your profitability. By having a Customer Support Agreement you are in control of your service costs.

Volvo EC350D in detail

Engine

The in-line six cylinder water cooled diesel engine, which provide excellent performance, is equipped with EMS 2.2 electronic-controlled, high pressure fuel injectors, cooled external EGR*, turbo charger with waste gate, air-to-air intercooler. (*for certain regions)

Engine	Volvo	D8F/D8K*
Max power at	r/s / r/min	30 / 1 800
Net, ISO 9249 / SAE J1349	kW / hp	197 / 268
Gross, ISO 14396 / SAE J1995	kW / hp	210 / 286
Max torque at	Nm/ r/min	1 340 / 1 350
No. of cylinders		6
Displacement	l	7.8
Bore	mm	110
Stroke	mm	138

Electrical system

Well protected high-capacity electrical system. Waterproof double-lock connectors are used to ensure corrosion-free connection. Main relays and fuses are located in a shielded electrical distribution box. The master switch is standard. Advanced monitoring of machine functions and important diagnostic information are displayed on the I-ECU.

Voltage	V	24
Battery capacity	V / Ah	2 x 12 / 200
Alternator	V / Ah	28 / 110
Start motor	V / kW	24 / 5.5

Swing system

The swing system uses an axial piston motor, driving a planetary gearbox for maximum torque. Automatic holding brake and anti-rebound valve are standard.

Max. slew speed	r/min	10.3
Max. slew torque	kNm	126

Drive

Each track is powered by an automatic two-speed shift travel motor. The track brakes are multi-disc, spring-applied and hydraulic released. The travel motor, brake and planetary gears are well protected within the track frame.

Max. drawbar pull	kN	261
Max. travel speed	km/h	3.3 / 5.1
Gradeability	°	35

Undercarriage

Robust X-shaped frame with greased and sealed track chains.

EC350D

Track shoes		2 x 45
Link pitch	mm	215.9
Shoe width, triple grouser	mm	600 / 700 / 800
Shoe width, double grouser	mm	600
Bottom rollers		2 x 7
Top rollers		2 x 2

EC350DL

Track shoes		2 x 48
Link pitch	mm	215.9
Shoe width, triple grouser	mm	600 / 700 / 800
Shoe width, double grouser	mm	600
Bottom rollers	mm	2 x 8
Top rollers		2 x 2

Hydraulic system

The new electro-hydraulic system and new MCV (main control valve) use intelligent technology to control on-demand flow for high-productivity, high-digging capacity and excellent fuel consumption.

The following important functions are included in the system for optimum performance:

Summation system: Combines the flow of both hydraulic pumps to ensure quick cycle times and high productivity.

Boom priority: Gives priority to the boom operation for faster raising when loading or performing deep excavations.

Arm priority: Gives priority to the arm operation for faster cycle times in leveling and for increased bucket filling when digging.

Swing priority: Gives priority to swing functions for faster simultaneous operations.

Boom, arm and bucket regeneration system: Prevents cavitation and provides flow to other movements during simultaneous operations for maximum productivity.

Power boost: All digging and lifting forces are increased.

Holding valves: Boom and arm holding valves prevent the digging equipment from creeping.

Main pump, Type 2 x variable displacement axial piston pumps		
Maximum flow	l/min	2 x 288
Pilot pump, Gear pump		
Maximum flow	l/min	1 x 18
Relief valve setting		
Implement	MPa	33.3 / 36.3
Travel circuit	MPa	33.3
Slew circuit	MPa	27.9
Pilot circuit	MPa	3.9

Hydraulic cylinders

Mono boom		2
Bore x Stroke	ø x mm	150 x 1 530
Arm		1
Bore x Stroke	ø x mm	170 x 1 700
Bucket		1
Bore x Stroke	ø x mm	140 X 1 285
Bucket for ME		1
Bore x Stroke	ø x mm	155 X 1 250

Service refill capacities

Fuel tank	l	580
Hydraulic system, total	l	465
Hydraulic tank	l	215
Engine oil	l	32
Engine coolant	l	41
Swing reduction unit	l	6.1
Travel reduction unit	l	2 x 6.8

Cab

Access to the operator cab is made easy thanks to a wide door opening. The cab is installed on hydraulic dampening mounts to reduce shocks and vibration levels. These, along with sound absorbing lining, provide low noise levels. The cab has excellent all-round visibility. The front windshield easily slide up into the ceiling. The lower front glass can be removed and stored in the side door.

Integrated air-conditioning and heating system: The pressurized and filtered cab air is supplied by an automatically-controlled fan. The air is distributed throughout the cab from 14 vents.

Ergonomic operator's seat: The adjustable seat and joystick console move independently to accommodate the operator. The seat features multiple adjustments and a seat belt for the operator's comfort and safety.

ROPS Cab is available as an option to comply with ISO 12117-2 standards.

Sound Level

Sound level in cab according to ISO 6396		
LpA	dB(A)	73
External sound level according to ISO 6395 and EU Noise Directive (2000/14/EC) and 474-1:2006 +A1:2009		
LwA	dB(A)	106

Specifications

MACHINE WEIGHTS AND GROUND PRESSURE

EC350D	6.45m boom 2.6m arm 1 644kg bucket 7 000kg counterweight				6.45m boom 2.6m arm 1 644kg bucket 7 250kg counterweight			
Description	Shoe width	Operating weight	Ground pressure	Overall width	Shoe width	Operating weight	Ground pressure	Overall width
	mm	kg	kPa	mm	mm	kg	kPa	mm
Triple grouser	600	34 800	72.0	3 190	600	35 050	72.6	3 190
	700	35 300	58.4	3 290	700	35 550	58.8	3 290
	800	35 700	51.7	3 390	800	35 950	52.0	3 390
Double grouser	600	35 400	68.3	3 190	600	35 650	68.8	3 190

EC350D	6.45m boom 3.2m arm 1 644kg bucket 7 000kg counterweight			
Description	Shoe width	Operating weight	Ground pressure	Overall width
	mm	kg	kPa	mm
Triple grouser	600	34 850	72.1	3 190
	700	35 400	58.5	3 290
	800	35 750	51.7	3 390
Double grouser	600	35 450	68.4	3 190

EC350DL	6.2m boom 2.6m arm 1 880kg bucket 7 250kg counterweight				6.45m boom 2.6m arm 1 644kg bucket 7 000kg counterweight			
Description	Shoe width	Operating weight	Ground pressure	Overall width	Shoe width	Operating weight	Ground pressure	Overall width
	mm	kg	kPa	mm	mm	kg	kPa	mm
Triple grouser	600	36 000	69.0	3 190	600	35 700	68.5	3 190
	700	36 550	60.1	3 290	700	36 300	59.7	3 290
	800	36 950	53.1	3 390	800	36 700	52.8	3 390
Double grouser	600	36 650	70.3	3 190	600	36 400	69.8	3 190

EC350DL	6.45m boom 2.6m arm 1 644kg bucket 7 250kg counterweight				6.45m boom 3.2m arm 1 880kg bucket 7 000kg counterweight			
Description	Shoe width	Operating weight	Ground pressure	Overall width	Shoe width	Operating weight	Ground pressure	Overall width
	mm	kg	kPa	mm	mm	kg	kPa	mm
Triple grouser	600	35 950	68.9	3 190	600	35 800	68.7	3 190
	700	36 550	60.1	3 290	700	36 350	59.7	3 290
	800	36 950	53.1	3 390	800	36 750	52.9	3 390
Double grouser	600	36 650	70.3	3 190	600	36 450	69.9	3 190

EC350DL	6.45m boom 3.2m arm 1 880kg bucket 7 250kg counterweight			
Description	Shoe width	Operating weight	Ground pressure	Overall width
	mm	kg	kPa	mm
Triple grouser	600	36 050	69.1	3 190
	700	36 600	60.2	3 290
	800	37 000	53.2	3 390
Double grouser	600	36 700	70.4	3 190

Specifications

BUCKET SELECTION GUIDE

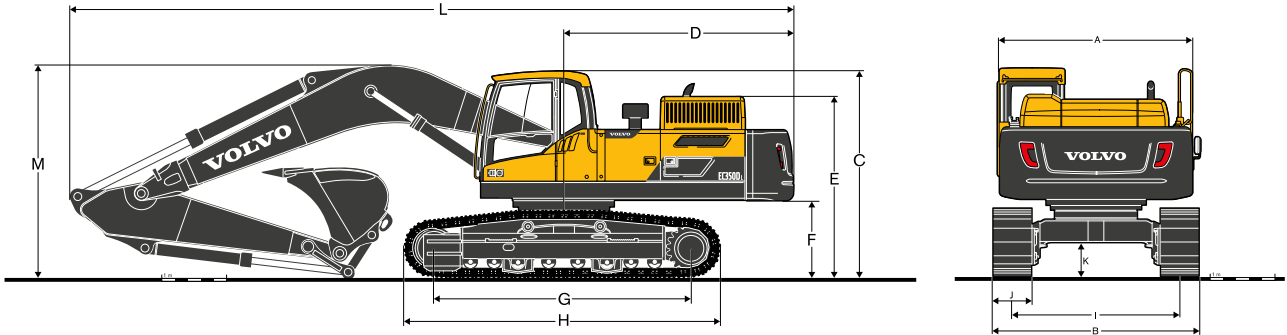
Bucket type		Capacity	Cutting width	Tip radius	Weight	Teeth	EC350D		
							6.45m Boom		
							600mm shoe, 7 000kg counterweight		
		L	mm	mm	kg	EA	2.6m	3.2m	3.9m
Direct fit Buckets	General purpose	1 670	1 350	1 715	1 644	5	C	C	C
		1 920	1 500	1 715	1 784	5	C	C	B
		2 330	1 750	1 715	1 982	5	B	A	X
	Heavy duty	1 920	1 500	1 715	1 880	5	D	C	B
		1 920	1 500	1 715	1 905	5	D	B	B
		1 920	1 500	1 715	1 959	5	C	B	B
		1 920	1 500	1 715	1 985	5	C	B	A
		2 330	1 750	1 715	2 085	5	B	A	X
		2 330	1 750	1 715	2 111	5	B	A	X
		2 330	1 750	1 715	2 165	5	B	A	X
2 330	1 750	1 715	2 191	5	B	A	X		
Bucket type		Capacity	Cutting width	Tip radius	Weight	Teeth	EC350D		
							6.45m Boom		
							600mm shoe, 7 250kg counterweight		
		L	mm	mm	kg	EA	2.6m	3.2m	3.9m
Direct fit Buckets	General purpose	1 670	1 350	1 715	1 644	5	C	C	C
		1 920	1 500	1 715	1 784	5	C	C	B
		2 330	1 750	1 715	1 982	5	B	B	X
	Heavy duty	1 920	1 500	1 715	1 880	5	D	C	B
		1 920	1 500	1 715	1 905	5	D	C	B
		1 920	1 500	1 715	1 959	5	D	C	B
		1 920	1 500	1 715	1 985	5	D	C	B
		2 330	1 750	1 715	2 085	5	B	A	X
		2 330	1 750	1 715	2 111	5	B	A	X
		2 330	1 750	1 715	2 165	5	B	A	X
2 330	1 750	1 715	2 191	5	B	A	X		
Bucket type		Capacity	Cutting width	Tip radius	Weight	Teeth	EC350DL		
							6.45m Boom		
							600mm shoe, 7 000kg counterweight		
		L	mm	mm	kg	EA	2.6m	3.2m	3.9m
Direct fit Buckets	General purpose	1 670	1 350	1 715	1 644	5	C	C	C
		1 920	1 500	1 715	1 784	5	C	C	B
		2 330	1 750	1 715	1 982	5	B	B	X
	Heavy duty	1 920	1 500	1 715	1 880	5	D	C	B
		1 920	1 500	1 715	1 905	5	D	C	B
		1 920	1 500	1 715	1 959	5	D	C	B
		1 920	1 500	1 715	1 985	5	D	C	B
		2 330	1 750	1 715	2 085	5	B	A	X
		2 330	1 750	1 715	2 111	5	B	A	X
		2 330	1 750	1 715	2 165	5	B	A	X
2 330	1 750	1 715	2 191	5	B	A	X		
Bucket type		Capacity	Cutting width	Tip radius	Weight	Teeth	EC350DL		
							6.45m Boom		
							600mm shoe, 7 250kg counterweight		
		L	mm	mm	kg	EA	2.6m	3.2m	3.9m
Direct fit Buckets	General purpose	1 670	1 350	1 715	1 644	5	C	C	C
		1 920	1 500	1 715	1 784	5	C	C	B
		2 330	1 750	1 715	1 982	5	B	B	A
	Heavy duty	1 920	1 500	1 715	1 880	5	D	C	B
		1 920	1 500	1 715	1 905	5	D	C	B
		1 920	1 500	1 715	1 959	5	D	C	B
		1 920	1 500	1 715	1 985	5	D	C	B
		2 330	1 750	1 715	2 085	5	B	B	X
		2 330	1 750	1 715	2 111	5	B	B	X
		2 330	1 750	1 715	2 165	5	B	A	X
2 330	1 750	1 715	2 191	5	B	A	X		

Please consult with your Volvo dealer for the proper match of buckets and attachments to suit the application. The recommendations are given as a guide only, based on typical operation conditions. Bucket capacity based on ISO 7451, heaped material with a 1:1 angle of

repose.

	Maximum material density
A	1200 - 1300 kg/m ³ Coal, Caliche, Shale
B	1400 - 1600 kg/m ³ Wet earth and clay, Limestone, Sandstone
C	1700 - 1800 kg/m ³ Granite, Wet sand, Well blasted rock
D	> 1900 kg/m ³ Wet mud, Iron ore

DIMENSIONS

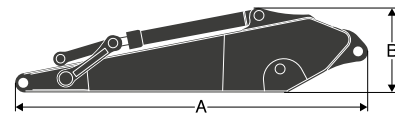
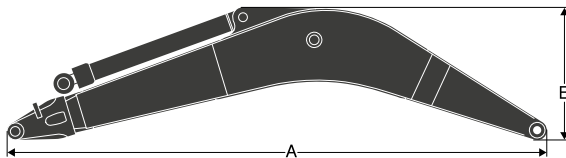


Description	Unit	EC350D				EC350DL			
		6.2	2.6	3.2	3.9	6.2	2.6	3.2	3.9
Boom	m	6.2	2.6	3.2	3.9	6.2	2.6	3.2	3.9
Arm	m	2.6	2.6	3.2	3.9	2.6	2.6	3.2	3.9
A Overall width of upper structure	mm	2 990	2 990	2 990	2 990	2 990	2 990	2 990	2 990
B Overall width	mm	3 190	3 190	3 190	3 190	3 190	3 190	3 190	3 190
C Overall height of cab	mm	3 230	3 230	3 230	3 230	3 230	3 230	3 230	3 230
D Tail slew radius	mm	3 560	3 560	3 560	3 560	3 560	3 560	3 560	3 560
E Overall height of engine hood	mm	2 830	2 830	2 830	2 830	2 830	2 830	2 830	2 830
F Counterweight clearance *	mm	1 180	1 180	1 180	1 180	1 180	1 180	1 180	1 180
G Tumbler length	mm	3 700	3 700	3 700	3 700	4 020	4 020	4 020	4 020
H Track length	mm	4 630	4 630	4 630	4 630	4 950	4 950	4 950	4 950
I Track gauge	mm	2 590	2 590	2 590	2 590	2 590	2 590	2 590	2 590
J Shoe width	mm	600	600	600	600	600	600	600	600
K Minimum ground clearance *	mm	500	500	500	500	500	500	500	500
L Overall length	mm	11 020	11 270	11 190	11 220	11 020	11 270	11 190	11 220
M Overall height of boom	mm	3 490	3 515	3 320	3 500	3 490	3 515	3 320	3 500

* Without shoe grouser

Boom

Arm



EC350D

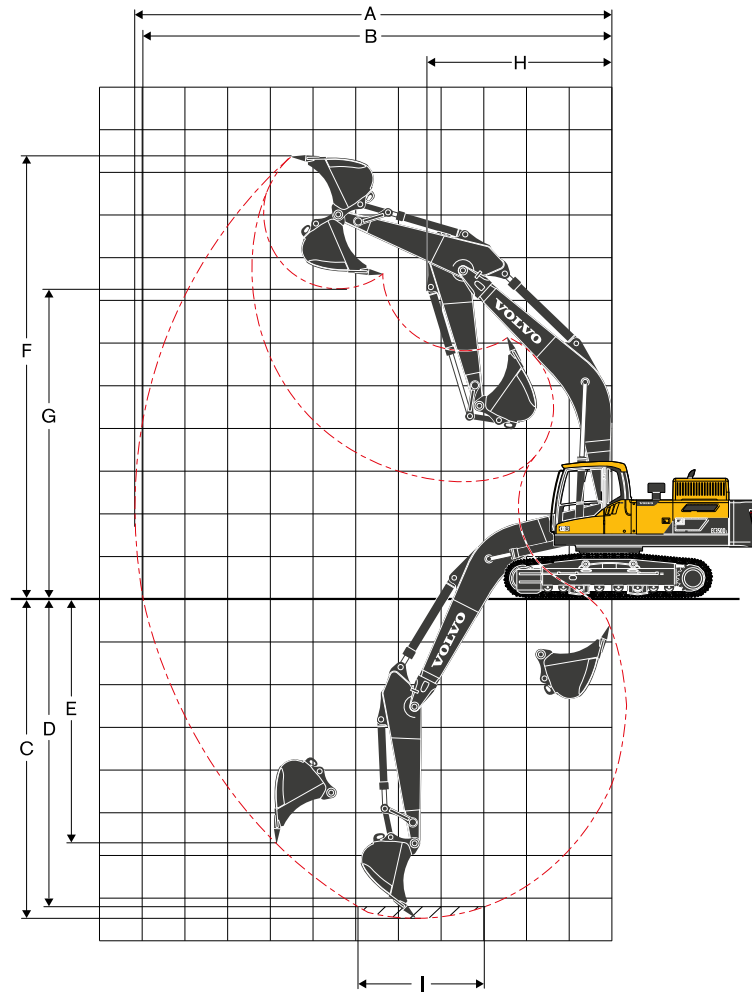
Description	Unit	ME	GP	HD	Description	Unit	ME	GP	HD	GP
Boom	m	6.2	6.45	6.45	Arm	m	2.6	3.2	3.2	3.9
Length (A)	mm	6 560	6 670	6 670	Length (A)	mm	3 765	4 350	4 350	5 045
Height (B)	mm	1 870	1 835	1 835	Height (B)	mm	1 125	1 070	1 070	1 070
Width	mm	816	816	816	Width	mm	560	560	560	560
Weight	kg	3 365	3 105	3 400	Weight	kg	2 015	1 900	2 040	2 165

* Includes cylinder, piping and pin, excludes boom cyl. Pin

* Includes cylinder, linkage and pin

Specifications

WORKING RANGES



Description		Unit	EC350D / EC350DL				
Boom		m	6.2	6.45			
Arm		m	2.6	2.6	3.2	3.9	
A	Max. digging reach	mm	10 440	10 590	11 110	11 750	
B	Max. digging reach on ground	mm	10 210	10 370	10 900	11 560	
C	Max. digging depth	mm	6 740	6 880	7 480	8 180	
D	Max. digging depth (l = 2 440 mm level)	mm	6 550	6 690	7 310	8 030	
E	Max. vertical wall digging depth	mm	5 260	5 440	5 890	6 500	
F	Max. cutting height	mm	10 080	10 170	10 330	10 600	
G	Max. dumping height	mm	6 820	7 060	7 250	7 520	
H	Min. front swing radius	mm	4 120	4 320	4 280	4 300	
Digging forces with direct fit bucket							
Bucket radius		mm	1 828	1 738	1 738	1 738	
Breakout force - bucket	Normal	SAE	kN	206	177	177	177
	Power boost	SAE	kN	224	193	193	193
	Normal	ISO	kN	236	201	201	201
	Power boost	ISO	kN	257	219	219	219
Tearout force - dipper arm	Normal	SAE	kN	183	187	156	136
	Power boost	SAE	kN	200	203	170	148
	Normal	ISO	kN	190	192	160	139
	Power boost	ISO	kN	206	209	174	151
Rotation angle, bucket		°		164	178	178	178

LIFTING CAPACITY EC350D

Lifting capacity at the arm end without bucket.

For lifting capacity including bucket, simply subtract actual weight of the direct fit bucket or the bucket with quick coupler from the following values.

	Lifting hook related to ground level	1.5 m		3.0 m		4.5 m		6.0 m		7.5 m		9.0 m		Max. reach		
		Along	Across	Along	Across	Along	Across	Along	Across	Along	Across	Along	Across	Along	Across	mm
Boom	7.5 m kg	-	-	-	-	-	-	*9 470	*9 470	-	-	-	-	*9 620	8 470	6 697
6.2m	6.0 m kg	-	-	-	-	-	-	*9 930	*9 930	*9 480	6 940	-	-	9 210	6 660	7 677
Arm	4.5 m kg	-	-	-	-	*14 060	*14 060	*11 210	9 610	9 420	6 780	-	-	8 010	5 760	8 271
2.6m	3.0 m kg	-	-	-	-	*17 520	13 750	*12 790	9 080	9 150	6 530	-	-	7 440	5 310	8 563
Shoe	1.5 m kg	-	-	-	-	19 650	12 960	12 430	8 640	8 900	6 300	-	-	7 290	5 180	8 583
600mm	0 m kg	-	-	-	-	19 340	12 700	12 150	8 380	8 740	6 150	-	-	7 530	5 330	8 334
CWT	-1.5 m kg	-	-	*17 180	*17 180	19 370	12 720	12 090	8 320	8 730	6 140	-	-	8 290	5 850	7 788
7 000kg	-3.0 m kg	-	-	*23 420	*23 420	*17 540	12 950	12 240	8 460	-	-	-	-	10 060	7 070	6 876
	-4.5 m kg	-	-	-	-	*13 470	13 450	-	-	-	-	-	-	*10 780	10 290	5 410
Boom	7.5 m kg	-	-	-	-	-	-	*9 470	*9 470	-	-	-	-	*9 620	8 630	6 697
6.2m	6.0 m kg	-	-	-	-	-	-	*9 930	*9 930	*9 480	7 080	-	-	9 360	6 790	7 677
Arm	4.5 m kg	-	-	-	-	*14 060	*14 060	*11 210	9 800	9 590	6 920	-	-	8 150	5 880	8 271
2.6m	3.0 m kg	-	-	-	-	*17 520	14 020	*12 790	9 260	9 320	6 670	-	-	7 580	5 430	8 563
Shoe	1.5 m kg	-	-	-	-	*19 740	13 230	12 650	8 820	9 070	6 440	-	-	7 420	5 300	8 583
600mm	0 m kg	-	-	-	-	19 690	12 970	12 370	8 570	8 910	6 290	-	-	7 670	5 450	8 334
CWT	-1.5 m kg	-	-	*17 180	*17 180	*19 480	12 990	12 310	8 510	8 890	6 280	-	-	8 450	5 990	7 788
7 250kg	-3.0 m kg	-	-	*23 420	*23 420	*17 540	13 220	12 460	8 650	-	-	-	-	10 240	7 220	6 876
	-4.5 m kg	-	-	-	-	*13 470	*13 470	-	-	-	-	-	-	*10 780	10 500	5 410
Boom	7.5 m kg	-	-	-	-	-	-	-	-	-	-	-	-	*9 210	7 880	7 014
6.45m	6.0 m kg	-	-	-	-	-	-	*9 750	*9 750	*9 140	6 980	-	-	8 700	6 300	7 953
Arm	4.5 m kg	-	-	-	-	*14 260	*14 260	*11 120	9 570	9 420	6 780	-	-	7 630	5 490	8 528
2.6m	3.0 m kg	-	-	-	-	-	-	*12 750	9 010	9 130	6 510	-	-	7 110	5 080	8 811
Shoe	1.5 m kg	-	-	-	-	-	-	12 360	8 570	8 870	6 270	-	-	6 970	4 950	8 831
600mm	0 m kg	-	-	-	-	19 240	12 610	12 090	8 320	8 710	6 120	-	-	7 190	5 090	8 589
CWT	-1.5 m kg	-	-	*14 380	*14 380	19 290	12 650	12 020	8 270	8 680	6 090	-	-	7 860	5 550	8 061
7 000kg	-3.0 m kg	-	-	*23 260	*23 260	*17 620	12 870	12 160	8 390	-	-	-	-	9 380	6 600	7 184
	-4.5 m kg	-	-	*18 430	*18 430	*14 150	13 320	-	-	-	-	-	-	*10 630	9 220	5 799
Boom	7.5 m kg	-	-	-	-	-	-	-	-	-	-	-	-	*9 210	8 030	7 014
6.45m	6.0 m kg	-	-	-	-	-	-	*9 750	*9 750	*9 140	7 120	-	-	8 850	6 420	7 953
Arm	4.5 m kg	-	-	-	-	*14 260	*14 260	*11 120	9 750	9 590	6 920	-	-	7 770	5 610	8 528
2.6m	3.0 m kg	-	-	-	-	-	-	*12 750	9 190	9 300	6 650	-	-	7 250	5 200	8 811
Shoe	1.5 m kg	-	-	-	-	-	-	12 580	8 750	9 040	6 410	-	-	7 100	5 070	8 831
600mm	0 m kg	-	-	-	-	19 590	12 880	12 310	8 510	8 870	6 260	-	-	7 320	5 200	8 589
CWT	-1.5 m kg	-	-	*14 380	*14 380	*19 370	12 920	12 250	8 450	8 840	6 230	-	-	8 010	5 680	8 061
7 250kg	-3.0 m kg	-	-	*23 260	*23 260	*17 620	13 140	12 380	8 570	-	-	-	-	9 560	6 750	7 184
	-4.5 m kg	-	-	*18 430	*18 430	*14 150	13 590	-	-	-	-	-	-	*10 630	9 410	5 799
Boom	7.5 m kg	-	-	-	-	-	-	-	-	*8 290	7 210	-	-	*7 520	6 920	7 664
6.45m	6.0 m kg	-	-	-	-	-	-	-	-	*8 400	7 140	-	-	*7 320	5 690	8 531
Arm	4.5 m kg	-	-	-	-	*12 740	*12 740	*10 280	9 780	*9 060	6 900	7 080	5 090	6 980	5 020	9 069
3.2m	3.0 m kg	-	-	-	-	*16 360	13 970	*12 020	9 180	9 230	6 600	6 940	4 970	6 540	4 670	9 336
Shoe	1.5 m kg	-	-	-	-	*19 020	13 010	12 480	8 670	8 930	6 320	6 800	4 830	6 410	4 550	9 354
600mm	0 m kg	-	-	-	-	19 240	12 610	12 120	8 350	8 710	6 120	6 700	4 740	6 560	4 640	9 126
CWT	-1.5 m kg	-	-	*14 620	*14 620	19 160	12 540	11 970	8 220	8 620	6 030	-	-	7 080	5 000	8 632
7 000kg	-3.0 m kg	*17 030	*17 030	*23 090	*23 090	*18 550	12 680	12 030	8 270	8 690	6 100	-	-	8 210	5 780	7 820
	-4.5 m kg	-	-	*21 460	*21 460	*15 870	13 030	*11 890	8 530	-	-	-	-	*10 410	7 560	6 573
Boom	7.5 m kg	-	-	-	-	-	-	-	-	*8 290	7 340	-	-	*7 520	7 060	7 664
6.45m	6.0 m kg	-	-	-	-	-	-	-	-	*8 400	7 270	-	-	*7 320	5 810	8 531
Arm	4.5 m kg	-	-	-	-	*12 740	*12 740	*10 280	9 960	*9 060	7 040	7 210	5 200	7 110	5 130	9 069
3.2m	3.0 m kg	-	-	-	-	*16 360	14 240	*12 020	9 370	9 390	6 740	7 070	5 080	6 670	4 780	9 336
Shoe	1.5 m kg	-	-	-	-	*19 020	13 280	12 700	8 850	9 090	6 460	6 920	4 940	6 530	4 660	9 354
600mm	0 m kg	-	-	-	-	19 590	12 880	12 340	8 530	8 870	6 260	6 820	4 850	6 690	4 750	9 126
CWT	-1.5 m kg	-	-	*14 620	*14 620	19 510	12 810	12 200	8 400	8 780	6 170	-	-	7 220	5 120	8 632
7 250kg	-3.0 m kg	*17 030	*17 030	*23 090	*23 090	*18 550	12 950	12 250	8 450	8 850	6 230	-	-	8 370	5 910	7 820
	-4.5 m kg	-	-	*21 460	*21 460	*15 870	13 300	*11 890	8 710	-	-	-	-	*10 410	7 720	6 573

Notes: 1. Machine in "Fine Mode-F" (Power Boost) for lifting capacities. 2. The above loads are in compliance with SAE J1097 and ISO 10567 Hydraulic Excavator Lifting Capacity Standards. 3. Rated loads do not exceed 87% of hydraulic lifting capacity or 75% of tipping load. 4. Rated loads marked with an asterisk (*) are limited by hydraulic capacity rather than tipping load.

Specifications

LIFTING CAPACITY EC350D

Lifting capacity at the arm end without bucket.

For lifting capacity including bucket, simply subtract actual weight of the direct fit bucket or the bucket with quick coupler from the following values.

	Lifting hook related to ground level	1.5 m		3.0 m		4.5 m		6.0 m		7.5 m		9.0 m		Max. reach		
		Along	Across	Along	Across	Along	Across	Along	Across	Along	Across	Along	Across	Along	Across	mm
Boom	7.5 m kg	-	-	-	-	-	-	*9 470	*9 470	-	-	-	-	*9 620	8 650	6 697
6.2m	6.0 m kg	-	-	-	-	-	-	*9 930	*9 930	*9 480	7 100	-	-	9 420	6 810	7 677
Arm	4.5 m kg	-	-	-	-	*14 060	*14 060	*11 210	9 820	9 650	6 940	-	-	8 210	5 900	8 271
2.6m	3.0 m kg	-	-	-	-	*17 520	14 050	*12 790	9 290	9 380	6 690	-	-	7 630	5 450	8 563
Shoe	1.5 m kg	-	-	-	-	*19 740	13 270	12 740	8 840	9 130	6 460	-	-	7 470	5 310	8 583
800mm	0 m kg	-	-	-	-	19 820	13 010	12 460	8 590	8 970	6 310	-	-	7 720	5 470	8 334
CWT	-1.5 m kg	-	-	*17 180	*17 180	*19 480	13 030	12 390	8 530	8 950	6 300	-	-	8 510	6 000	7 788
7 000kg	-3.0 m kg	-	-	*23 420	*23 420	*17 540	13 250	12 550	8 670	-	-	-	-	10 310	7 240	6 876
	-4.5 m kg	-	-	-	-	*13 470	*13 470	-	-	-	-	-	-	*10 780	10 530	5 410
Boom	7.5 m kg	-	-	-	-	-	-	*9 470	*9 470	-	-	-	-	*9 620	8 810	6 697
6.2m	6.0 m kg	-	-	-	-	-	-	*9 930	*9 930	*9 480	7 240	-	-	*9 500	6 940	7 677
Arm	4.5 m kg	-	-	-	-	*14 060	*14 060	*11 210	10 000	9 810	7 080	-	-	8 350	6 020	8 271
2.6m	3.0 m kg	-	-	-	-	*17 520	14 330	*12 790	9 470	9 540	6 830	-	-	7 760	5 560	8 563
Shoe	1.5 m kg	-	-	-	-	*19 740	13 540	12 960	9 030	9 290	6 590	-	-	7 610	5 430	8 583
800mm	0 m kg	-	-	-	-	20 170	13 280	12 680	8 770	9 130	6 450	-	-	7 870	5 590	8 334
CWT	-1.5 m kg	-	-	*17 180	*17 180	*19 480	13 300	12 610	8 710	9 120	6 430	-	-	8 660	6 130	7 788
7 250kg	-3.0 m kg	-	-	*23 420	*23 420	*17 540	13 520	12 770	8 850	-	-	-	-	10 490	7 390	6 876
	-4.5 m kg	-	-	-	-	*13 470	*13 470	-	-	-	-	-	-	*10 780	10 740	5 410
Boom	7.5 m kg	-	-	-	-	-	-	-	-	-	-	-	-	*9 210	8 050	7 014
6.45m	6.0 m kg	-	-	-	-	-	-	*9 750	*9 750	*9 140	7 140	-	-	8 910	6 440	7 953
Arm	4.5 m kg	-	-	-	-	*14 260	*14 260	*11 120	9 770	9 650	6 940	-	-	7 820	5 620	8 528
2.6m	3.0 m kg	-	-	-	-	-	-	*12 750	9 220	9 360	6 670	-	-	7 300	5 210	8 811
Shoe	1.5 m kg	-	-	-	-	-	-	12 660	8 780	9 100	6 430	-	-	7 150	5 080	8 831
800mm	0 m kg	-	-	-	-	19 710	12 920	12 390	8 530	8 930	6 280	-	-	7 370	5 220	8 589
CWT	-1.5 m kg	-	-	*14 380	*14 380	*19 370	12 960	12 330	8 480	8 900	6 250	-	-	8 070	5 690	8 061
7 000kg	-3.0 m kg	-	-	*23 260	*23 260	*17 620	13 180	12 470	8 600	-	-	-	-	9 620	6 770	7 184
	-4.5 m kg	-	-	*18 430	*18 430	*14 150	13 630	-	-	-	-	-	-	*10 630	9 440	5 799
Boom	7.5 m kg	-	-	-	-	-	-	-	-	-	-	-	-	*9 210	8 200	7 014
6.45m	6.0 m kg	-	-	-	-	-	-	*9 750	*9 750	*9 140	7 280	-	-	9 060	6 570	7 953
Arm	4.5 m kg	-	-	-	-	*14 260	*14 260	*11 120	9 950	*9 680	7 080	-	-	7 960	5 740	8 528
2.6m	3.0 m kg	-	-	-	-	-	-	*12 750	9 400	9 520	6 810	-	-	7 430	5 320	8 811
Shoe	1.5 m kg	-	-	-	-	-	-	12 880	8 960	9 260	6 570	-	-	7 290	5 200	8 831
800mm	0 m kg	-	-	-	-	20 060	13 190	12 610	8 710	9 090	6 410	-	-	7 510	5 340	8 589
CWT	-1.5 m kg	-	-	*14 380	*14 380	*19 370	13 230	12 550	8 660	9 060	6 380	-	-	8 210	5 820	8 061
7 250kg	-3.0 m kg	-	-	*23 260	*23 260	*17 620	13 450	12 690	8 780	-	-	-	-	9 790	6 910	7 184
	-4.5 m kg	-	-	*18 430	*18 430	*14 150	13 900	-	-	-	-	-	-	*10 630	9 630	5 799
Boom	7.5 m kg	-	-	-	-	-	-	-	-	*8 290	7 360	-	-	*7 520	7 070	7 664
6.45m	6.0 m kg	-	-	-	-	-	-	-	-	*8 400	7 290	-	-	*7 320	5 820	8 531
Arm	4.5 m kg	-	-	-	-	*12 740	*12 740	*10 280	9 990	*9 060	7 060	7 250	5 220	7 160	5 150	9 069
3.2m	3.0 m kg	-	-	-	-	*16 360	14 270	*12 020	9 390	9 450	6 760	7 120	5 090	6 710	4 790	9 336
Shoe	1.5 m kg	-	-	-	-	*19 020	13 320	12 780	8 880	9 150	6 480	6 970	4 960	6 580	4 670	9 354
800mm	0 m kg	-	-	-	-	19 720	12 920	12 420	8 550	8 930	6 270	6 870	4 860	6 740	4 770	9 126
CWT	-1.5 m kg	-	-	*14 620	*14 620	19 640	12 850	12 280	8 430	8 840	6 190	-	-	7 270	5 130	8 632
7 000kg	-3.0 m kg	*17 030	*17 030	*23 090	*23 090	*18 550	12 990	12 330	8 470	8 910	6 250	-	-	8 420	5 930	7 820
	-4.5 m kg	-	-	*21 460	*21 460	*15 870	13 340	*11 890	8 740	-	-	-	-	*10 410	7 740	6 573
Boom	7.5 m kg	-	-	-	-	-	-	-	-	*8 290	7 500	-	-	*7 520	7 210	7 664
6.45m	6.0 m kg	-	-	-	-	-	-	-	-	*8 400	7 430	-	-	*7 320	5 940	8 531
Arm	4.5 m kg	-	-	-	-	*12 740	*12 740	*10 280	10 170	*9 060	7 190	7 380	5 330	7 290	5 260	9 069
3.2m	3.0 m kg	-	-	-	-	*16 360	14 540	*12 020	9 570	9 620	6 890	7 250	5 200	6 830	4 900	9 336
Shoe	1.5 m kg	-	-	-	-	*19 020	13 590	13 000	9 060	9 310	6 610	7 100	5 070	6 700	4 780	9 354
800mm	0 m kg	-	-	-	-	20 040	13 190	12 640	8 740	9 100	6 410	7 000	4 970	6 870	4 880	9 126
CWT	-1.5 m kg	-	-	*14 620	*14 620	*19 810	13 120	12 500	8 610	9 000	6 330	-	-	7 410	5 250	8 632
7 250kg	-3.0 m kg	*17 030	*17 030	*23 090	*23 090	*18 550	13 260	12 560	8 660	9 070	6 390	-	-	8 580	6 060	7 820
	-4.5 m kg	-	-	*21 460	*21 460	*15 870	13 610	*11 890	8 920	-	-	-	-	*10 410	7 900	6 573

Notes: 1. Machine in "Fine Mode-F" (Power Boost) for lifting capacities. 2. The above loads are in compliance with SAE J1097 and ISO 10567 Hydraulic Excavator Lifting Capacity Standards. 3. Rated loads do not exceed 87% of hydraulic lifting capacity or 75% of tipping load. 4. Rated loads marked with an asterisk (*) are limited by hydraulic capacity rather than tipping load.

Equipment

STANDARD EQUIPMENT

Engine

Turbocharged, four-stroke diesel engine with water cooling, direct injection and charged air cooler

Air filter with indicator

Air intake heater

Air screen cap

Fuel filter and water separator

Alternator, 110 A

Electric/Electronic control system

Contronics

Advanced mode control system

Self-diagnostic system

Machine status indication

Engine speed sensing power control

Automatic idling system

One-touch power boost

Safety stop/start function

Adjustable LCD color monitor

Master electrical disconnect switch

Engine restart prevention circuit

High-capacity halogen work lights:

Two frame-mounted

Two boom-mounted

Batteries, 2 x 12 V / 200 Ah

Start motor, 24 V / 5.5 kW

Hydraulic system

Automatic sensing hydraulic system

Summation system

Boom priority

Arm priority

Swing priority

ECO mode fuel saving technology

Boom, arm and bucket regeneration valves

Swing anti-rebound valves

Boom and arm holding valves

Multi-stage filtering system

Cylinder cushioning

Cylinder contamination seals

Automatic two-speed travel motors

Hydraulic oil, ISO VG 46

Frame

Access way with handrail

Tool storage area

Punched metal anti-slip plates

Undercovers

Cab and interior

Travel pedals and hand levers

Adjustable operator seat and joystick control console

Control joysticks

Heater & air-conditioner, automatic

Flexible antenna

AM/FM stereo with CD player, MP3 and USB input

Control lock out lever

Cab, all-weather sound suppressed, includes:

Cup holders

Door locks

Tinted glass

Floor mat

Horn

Large storage area

Pull-up type front window

Removable lower windshield

Seat belt

Safety glass

Emergency hammer

Sun screens, front, roof, rear

Windshield wiper with intermittent feature

Master key

Undercarriage

Undercover

Hydraulic track adjusters

Greased and sealed track link

Track Guard

Track shoes

600 mm with triple grousers

Digging equipment

Linkage

OPTIONAL EQUIPMENT

Engine

Auto engine shutdown

Oil bath pre-cleaner

Block heater: 240 V

Diesel coolant heater, 10 kW

Extra water separator

Water separator with heater

Fuel filler pump: 35 lpm, 50 lpm with automatic shut-off

Electric

Extra work lights:

Three cab-mounted (Two front, one rear)

Two boom-mounted

One counterweight-mounted

Travel alarm

Caretrack and three year Caretrack subscription

Anti-theft with code lock system

Rotating warning beacon

OPTIONAL EQUIPMENT

Hydraulic system

Hose rupture valve: boom, arm

Overload warning device

Boom float function with HRV

Boom float function without HRV

Hydraulic piping:

Work tool management system (up to 20 programmable memories)

Breaker & shear, 1 and 2 pump flow

Additional return filter

Oil leak (drain) line on base machine

Quick coupler piping

Volvo hydraulic quick coupler S3, U36

Hydraulic oil, ISO VG 32, 68

Hydraulic oil, biodegradable ISO VG 46

Hydraulic oil, longlife oil ISO VG 32, 46, 68

Cab and interior

AM/FM stereo

ROPS (ISO12117-2) certified cab

Fabric seat without heater

Fabric seat with heater

Fabric seat with heater and air suspension

Opening top hatch

Cab-mounted falling object guard (FOG)

Frame-mounted falling object guard (FOG)

Cab-mounted falling object protective structure (FOPS)

Smoker kit (ashtray and lighter)

Cab and interior

Safety net for front window

Front rain shield

Sun shield, roof hatch (steel)

Rear view camera

Specific key

Frame

Walk way

Cabin entrance step

Rearview mirror on counterweight

Heavy-duty undercover for upper-structure

7 000kg, 7 250kg counterweight

Undercarriage

Full track guard

Track shoes:

700/800 mm with triple grousers

600 mm with double grousers

Heavy-duty undercover

Digging equipment

Boom: 6.2 m, 6.45 m

Arm: 2.6 m, 3.2 m, 3.9 m

Linkage with lifting eye

Service

Tool kit, daily maintenance

Tool kit, full scale

Spare parts

Other

Siberian kit

Selection of Volvo optional equipment

Hammer / Shear piping**Automatic engine shutdown****Joysticks****FOG****Full track guard****Protective cover**

Not all products are available in all markets. Under our policy of continuous improvement, we reserve the right to change specifications and design without prior notice. The illustrations do not necessarily show the standard version of the machine.

VOLVO

Volvo Construction Equipment

www.volvoce.com