

# ZOOMLION® QY50V

ZLJ54-10JQZ50V

## All Hydraulic Truck Crane performance specification

- Superstructure is manual proportion control. It has possessed some traits, such as predominant performance, simple structure and convenient for maintenance.
- By one section outrigger beam, the span is large and stability is excellent.
- The outrigger beam, which can be half extended, is flexible for operation.
- Electric-control double sides manipulation of the outrigger beam makes operation convenient.
- Compared with the common engine, Steyr energy saving engine with large power can help to save ten percent of energy while vehicle is running in middle/lower speed.
- The 5th outrigger contracted to position sound-and-light warning device locates in the driver's cab.
- Electro-accelerator technology registered in national patent makes operation more relax.



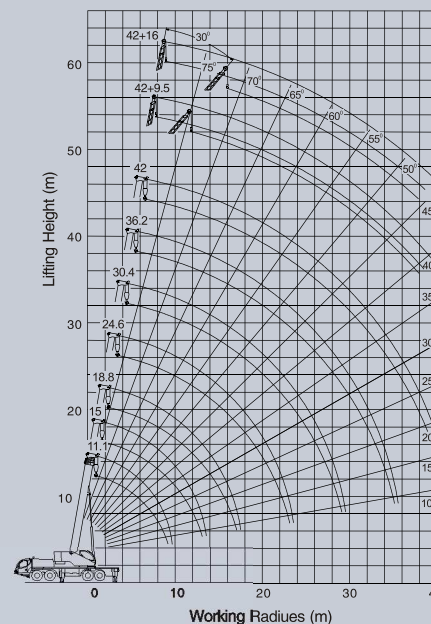
We reserve the right to change design and specifications without notice

### Table of Main Technical Performance and Specification

Working performance specification	Max. rated lifting capacity	kg	55000
	Max. lifting moment with basic boom length	kN.m	1764 1470 (When outrigger beam is half extending)
	Max. lifting moment with max. boom length	kN.m	940.8 793.8 (When outrigger beam is half extending)
	Basic boom max. lifting height	m	11.6
	Boom max. lifting height	m	42.1
Working speed	Jib max. lifting height	m	58.3
	Single line max. hoisting speed (main & auxiliary winches)	m/min	124
	Lifting boom extending time	s	95
	Lifting boom elevating time	s	55
Traveling specification	Slewing speed	r/min	0 ~ 2.3
	Max. traveling speed	km/h	75
	Max. gradeability	%	32
	Min. turning radius	m	12
	Min. clearance	m	0.26
	Free accelerating emission limit	FSN	≤2.5
Mass specification	Oil consumption/per 100 kilometers	L	40
	Self-weight in traveling condition (gross)	kg	40600
	Complete vehicle kerb mass	kg	40405
	Front axle load	kg	14850
Dimension specification	Tandem & rear axle load	kg	25750
	Overall dimensions(L × W × H)	mm	13300x2750x3650
	Outrigger longitudinal span	m	5.92
	Outrigger transversal span	m	6.90
	Boom length	m	11.1 ~ 42.0
	Boom angle	°	-2 ~ 80
	Jib length	m	9.5 ~ 16.0
Chassis	Type		ZLJ5412
	Engine Type		WD615.44
	Engine power	kW / rpm	235kw/2200r/min
	Rated output torque	N.m / rpm	1250N.m/1300 ~ 1600r/min
	Manufacturer		Puyuan company, Zoomlion
Hydraulic oil brand		L-HV32	

#### More choices which can satisfy more requirements

- Electro-hydraulic proportion control fixed on Superstructure control is optional. Main hydraulic elements are imported.
- The optional GPS locating system which can not only confirm the vehicle's location via satellite, but also long-distance and real-time monitor the equipments' operation condition and parameter, so when fault occurs, the solution can be provided.
- Single cool air conditioner and the heater fixed in superstructure are available as option.
- The interphone, which can realize the convenient contact between operator and commanders, is available as option.



We reserve the right to change design and specifications without notice

### Rated Lifting Capacity Table

The outrigger beam is fully extended.

Unit: kg

working radius (m)	Boom							boom angle (°)	boom + jib			
	outrigger fully extended, side & rear working area								42.00m+9.50m		42.00m+16.00m	
	Boom length								jib offset		jib offset	
	11.1	15.0	18.8	24.6	30.4	36.2	42.0		0°	30°	0°	30°
3.0	55000	40000	32000					80	4500	2150	2800	1000
3.5	50500	40000	32000					78	4500	2050	2600	1000
4.0	44500	40000	32000	24000				76	4200	1950	2300	1000
4.5	40000	36000	31000	23000				74	3800	1900	2000	1000
5.0	36000	33000	29000	21800	16000			72	3500	1850	1800	1000
5.5	32000	30000	27300	20600	16000			70	3200	1800	1650	1000
6.0	29000	27500	25700	19500	16000	12400		68	3000	1750	1550	900
6.5	26000	25500	24200	18500	15500	12400		66	2700	1700	1450	850
7.0	24000	23500	23000	17500	14600	12400	9000	64	2300	1650	1350	800
7.5	22300	21900	21500	16600	14000	12400	9000	62	2000	1600	1250	750
8.0	20300	19700	19400	15800	13300	11800	9000	60	1700	1350	1150	700
9.0	15800	15300	15000	14300	12200	10900	9000	58	1400	1100	1000	650
10.0		12200	12000	13000	11200	10000	9000	56	1150	850	850	500
11.0		9900	9700	10700	10300	9200	8300	54	950	650	650	
12.0		8200	8000	9000	8700	8500	7800	52	750	450		
14.0			5500	6500	7150	7500	6800					
16.0			3800	4800	5400	5750	6000					
18.0				3550	4150	4500	4750					
20.0				2600	3200	3500	3750					
22.0				1850	2400	2750	3000					
24.0					1800	2100	2350					
26.0					1300	1600	1850					
28.0					850	1200	1450					
30.0						850	1050					
32.0							750					
Fall	12	8	8	6	4	4	3	Fall			1	

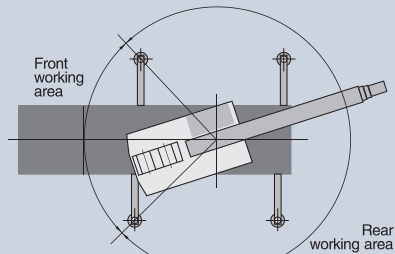
The outrigger beam is half extended.

Unit: kg

working radius (m)	Boom							boom angle (°)	boom + jib			
	outrigger half extended, side & rear working area								42.00m+9.50m		42.00m+16.00m	
	Boom length								jib offset		jib offset	
	11.1	15.0	18.8	24.6	30.4	36.2	42.0		0°	30°	0°	30°
3.0	50000	40000	32000					80	4500	2150	2800	1000
3.5	44000	40000	32000					78	4500	2050	2600	1000
4.0	38000	36000	32000	24000				76	4200	1950	2300	1000
4.5	33000	32000	31000	23000				74	3800	1900	2000	1000
5.0	27200	26600	26200	21800	16000			72	3000	1850	1800	1000
5.5	22200	21600	21300	20600	16000			70	2300	1650	1650	1000
6.0	18500	18000	17700	18900	16000	12400		68	1700	1250	1350	900
6.5	15700	15200	14900	16100	15500	12400		66	1200	900	900	700
7.0	13500	13000	12700	13900	14600	12400	9000	64	800	600	600	450
7.5	11700	11300	11000	12200	12900	12400	9000	62				
8.0	10300	9900	9600	10700	11400	11800	9000	60				
9.0		8000	7700	7400	8500	9100	9500	60				
10.0			6100	5800	6800	7400	7800	58				
11.0			4800	4500	5500	6000	6400	56				
12.0			3800	3500	4500	5000	5400	54				
14.0				2000	3000	3500	3800	52				
16.0				1000	1900	2400	2700					
18.0					1100	1600	1900					
20.0						1000	1300					
22.0							800					
24.0								600				
26.0												
28.0												
30.0												
32.0												
Fall	12	8	8	6	4	4	3	Fall			1	

- Note:**
- Above working condition is all with outrigger fully extended or half extending, never lift a load on the wheels.
  - Capacities above the thick line in the table are based on the structure strength of the crane, the others, on stability of the complete machine.
  - Set up the 5<sup>th</sup> outrigger, it is suitable for 360° operation.
  - The values in the table are the Max. permissible values and include weight of the hook, (the main hook is 510kg, the auxiliary hook, 120kg).

- A working radius given in the table is a horizontal distance from the centerline of the hook to the axis of the slewing ring when the hook is loaded.
- When actual boom length and working radius are between two values, determine lifting capacity according to bigger boom and radius.
- Rated lifting capacity should exclude the weight of clings and self-weight of jib (2000kg), when boom is used with jib extended.



Set up the 5<sup>th</sup> outrigger, it is suitable for 360° operation.

