

NEXT GENERATION EXCAVATORS

320 GC | 320 | 323





# A NEW RANGE OF CHOICES

---

The new line of Cat® Excavators was designed with a new approach to equipment families that gives you:

**MORE MODEL OPTIONS** | **MORE STANDARD TECHNOLOGIES** | **MORE PRICE POINTS**

Ready to help you make your business stronger, Cat Excavators give you new ways to get the most work done at the lowest cost—so you can put more money in your pocket.





# MADE TO MATCH YOUR WORK

## + RELIABLE. COMFORTABLE. PRODUCTIVE.

The **320 GC** offers you the ideal balance of dependable performance, operator productivity features and reduced costs. The 320 GC is a smart choice for operations where high reliability and low cost-per-hour performance are priorities.

## + MOVING THE STANDARD HIGHER

The **320** raises the bar for efficiency and fuel economy in this size class. With the industry's highest level of standard factory technology, a new cab focused on operator comfort, plus lower fuel and maintenance costs, the 320 will set a new pace for productivity and profit in your operation.

## + HIGH PRODUCTION PERFORMANCE

The **323** delivers power, speed and high production performance. With more standard technology than previous models, the highest lift capacity in the line-up, plus reduced fuel and maintenance costs, the Cat 323 has all you need to take your business to the next level.



### INCREASED EFFICIENCY

UP TO **45%**<sup>1</sup>

The Cat 320 and 323 offer the industry's highest level of standard factory-equipped technology, including Cat Grade with 2D, Grade with Assist and Payload.



### REDUCED FUEL CONSUMPTION

UP TO **20%**<sup>2</sup>

All Next Generation Excavators feature a precise combination of lower engine speed and a large hydraulic pump that delivers top performance while burning less fuel.



### LOWER MAINTENANCE COSTS

UP TO **15%**<sup>3</sup>

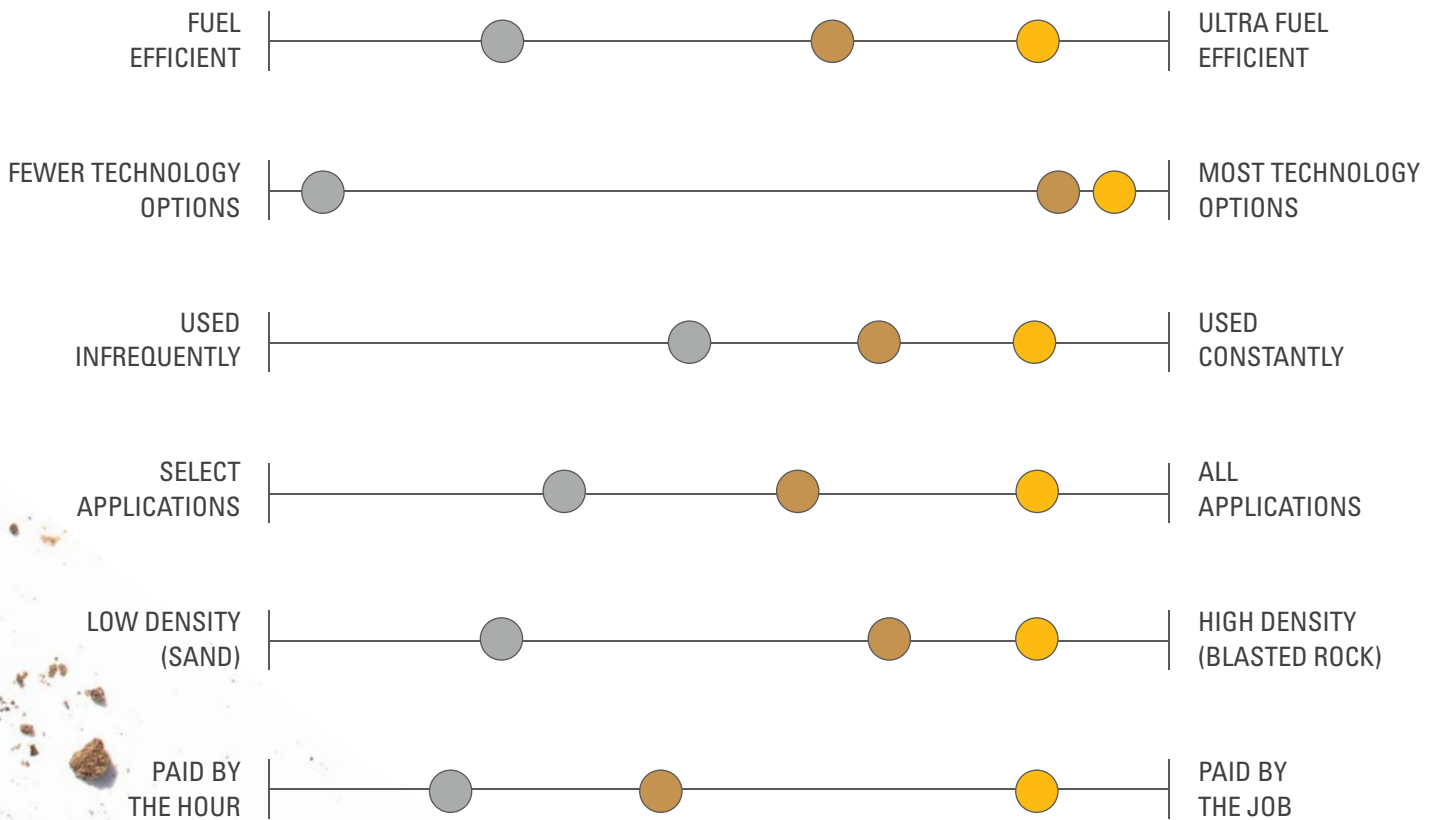
Extended and more synchronized maintenance intervals across the line-up increase uptime and reduce costs compared to previous excavator models.

<sup>1</sup>Operator efficiency gains compared to traditional grading methods. | <sup>2</sup>Compared to previous models. | <sup>3</sup>Cost reduction based on 12,000 hours of operation.



# WHICH WORKS BEST FOR YOUR JOBSITES?

Each new Cat Excavator is designed with features, technology and operator comfort tailored to different work needs. To find the excavator that best fits your operation, take a look at the categories below and see where you fall in each set of choices. The results will help you choose the excavator that delivers the results you want for your business.





## MORE WAYS TO LOWER YOUR COSTS

### UP TO 15% LOWER MAINTENANCE COSTS

---

Extended and more synchronized maintenance intervals help you get more done with less downtime and lower costs compared to previous models.

#### ADDITIONAL COST REDUCTIONS INCLUDE:

- + Double the service life on new air filter
- + Expanded capacity hydraulic filter
- + 20% reduction in hydraulic oil capacity

### UP TO 20% LOWER FUEL CONSUMPTION

---

A new larger hydraulic pump works with the engine system to deliver the power you need while burning less fuel.

**The new Smart Mode** power setting automatically adjusts engine and hydraulic power for the highest fuel efficiency—less power for tasks such as swinging and more power for digging.





CAT 320 & 323

# INCREASE YOUR EFFICIENCY UP TO 45%

YOU GET MORE DONE WITH STANDARD CAT CONNECT TECHNOLOGY



## STANDARD CAT GRADE WITH 2D

Cat Grade with 2D helps operators reach grade faster. Operators cut and fill to exact specifications without overcutting. No grade checkers are needed, so the work area is safer.



## STANDARD CAT PAYLOAD

Cat Payload technology delivers precise load targets with on-the-go weighing, which helps prevent over/under-loading and maximizes efficiency. Automated tracking helps manage production and lower cost.

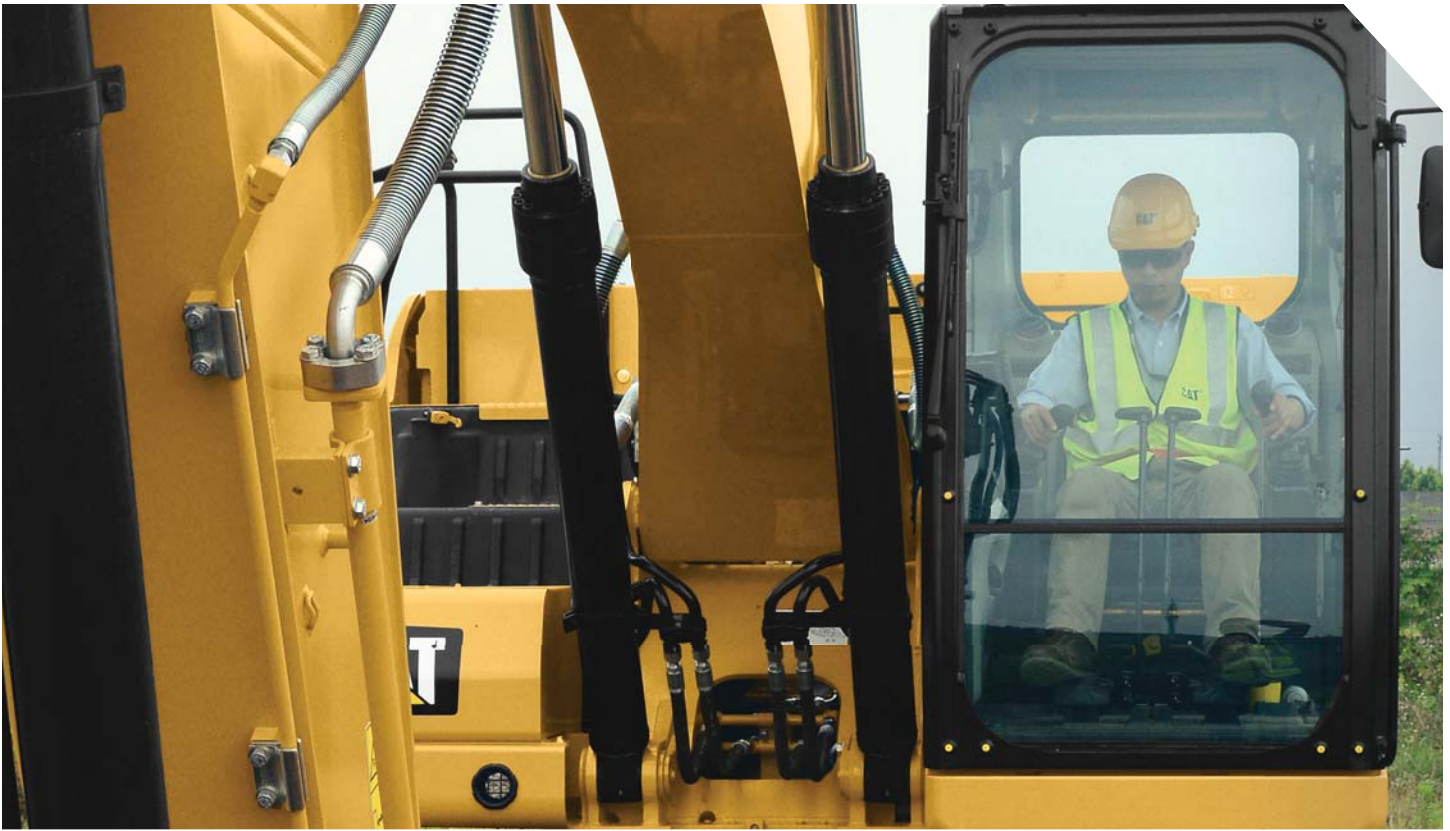


## STANDARD CAT GRADE WITH ASSIST

Automated boom, stick and bucket movements deliver more accurate cuts with less effort. The operator simply sets the depth and slope into the monitor and activates single-lever digging.

## AVAILABLE OPTIONAL UPGRADES

Cat Grade with Advanced 2D and Cat Grade with 3D are available as optional upgrades to increase productivity and expand grading capabilities. Grade with Advanced 2D adds in-field design capabilities through an additional 254 mm (10 inch) high-resolution touchscreen monitor. Grade with 3D adds satellite positioning for pinpoint accuracy.



# THE CHOICE IS YOURS

Compare the features and specifications of the new 20-ton line-up and find the excavator that can give you the highest return on your investment. You can get more information by talking to your Cat dealer or visiting [cat.com](http://cat.com).

SPECS	320 GC	320	323
Engine Power	C4.4 ACERT™ 107 kW (143 hp) <sup>1</sup>	C7.1 ACERT 117 kW (157 hp) <sup>1</sup>	C7.1 ACERT 117 kW (157 hp) <sup>1</sup>
Operating Weight	20 500 kg (45,200 lb)	22 000 kg (48,500 lb)	24 500 kg (54,000 lb)
Boom	Reach 5.7 m (18'8")	Reach 5.7 m (18'8")	Reach 5.7 m (18'8")
Stick	Reach 2.9 m (9'6")	Reach 2.9 m (9'6")	Reach 2.9 m (9'6")
Bucket	1.0 m <sup>3</sup> (1.31 yd <sup>3</sup> )	1.19 m <sup>3</sup> (1.56 yd <sup>3</sup> )	1.3 m <sup>3</sup> (1.7 yd <sup>3</sup> )
Maximum Digging Depth	6720 mm   22'1"	6720 mm   22'1"	6730 mm   22'1"
Maximum Reach at Ground Level	9860 mm   32'4"	9860 mm   32'4"	9870 mm   32'5"

FEATURES	320 GC	320	323
ROPS	●	●	●
100% Ground-Level Maintenance Access	●	●	●
Power Modes Including Smart Mode	●	●	●
Biodiesel Capability up to B20	●	●	●
Cat Link	●	●	●
Grade with 2D	X	●	●
Grade with Assist	X	●	●
Payload	X	●	●
Grade with Advanced 2D	X	○	○
Grade with 3D	X	○	○

● - standard ○ - optional X - not available

<sup>1</sup>Cat C4.4 ACERT and C7.1 ACERT Engines meet China III Nonroad emission standards (U.S. EPA Tier 3 and EU Stage IIIA).

# BUILT FOR IT.™

For more complete information on Cat products, dealer services and industry solutions, visit us on the web at [www.cat.com](http://www.cat.com)

© 2017 Caterpillar. All Rights Reserved.

VisionLink® is a trademark of Trimble Navigation Limited, registered in the United States and in other countries.

Materials and specifications are subject to change without notice. Featured machines in photos may include additional equipment. See your Cat dealer for available options.

CAT, CATERPILLAR, BUILT FOR IT, their respective logos, "Caterpillar Yellow," the "Power Edge" trade dress as well as corporate and product identity used herein, are trademarks of Caterpillar and may not be used without permission.  
[www.cat.com](http://www.cat.com) [www.caterpillar.com](http://www.caterpillar.com)



AEXQ2339-01  
Replaces AEXQ2339  
Build Number: 07A

